



# Garage Door Operators

Intelligent operators with well-designed accessories for maximum convenience

### Explanation of symbols



Bidirectional radio system enables active communication between transmitter and receiver.



Maximum protection against hackers thanks to 128-bit AES encryption with Rollingcode.



Disturbance-resistant radio signal guarantees a large range and reliability.



Durable, energy-saving and efficient lighting thanks to state-of-the-art LED technology.



Connection for battery pack possible. Supplies energy to the operator for up to 12 hours in the event of a power failure.



Energy-efficient consumption on standby.



Operators and radio receivers with this symbol are supported by the SOMlink service interface.







# WE DELIVER THE QUALITY – YOU ENJOY THE CONVENIENCE!

With reliable door operators from SOMMER, you can be assured of durability for years to come. This is thanks to their high quality and easy operation as well as the meticulous craftsmanship and certifications, allowing you to find just the right operator for the door you want.

Our door operators are tested and monitored at regular intervals by TÜV. They also comply with the latest European regulations on **Electrical Safety** and **Electromagnetic Compatibility**.

MADE IN GERMANY



3

## YOUR SAFETY IS WHAT DRIVES US

Safety and accident prevention are SOMMER's highest priorities. Our operators are equipped with dependable and proven technology that you can rely on.

The **automatic obstacle detection** ensures optimum protection. The operator reverses (reversion) if an

obstacle is encountered; this ensures that people, animals and vehicles will not be pinched or jammed.

The unique **emergency-unlock system** allows the door to be engaged and disengaged in every position. This permits easy manual opening and locking. In addition, and only available

from SOMMER, your garage door also remains locked in any position in the event of a power failure.

The **self-inhibiting motor** offers effective protection against break-in or unauthorised access.

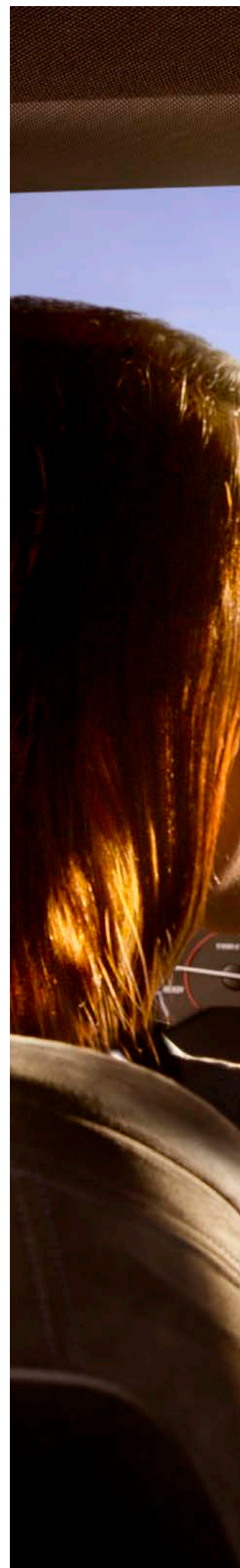
# GARAGE DOOR OPERATORS: **YOUR INTELLIGENT OPERATOR SYSTEM** FOR MAXIMUM RELIABILITY

4

**FASTER. MORE SECURE. MORE  
INTELLIGENT. BRIGHTER.**

**SOMMER GARAGE DOOR OPERATORS**

SOMMER base<sup>+</sup> and pro<sup>+</sup> operators are the innovative successors of the successful SOMMER travelling motor operator system. The intelligent motor carriage offers plenty of room to connect numerous accessories. The separate control unit housing of the SOMMER pro<sup>+</sup> offers even greater flexibility and convenience.







# BOTH BRAWN AND BRAINS

What makes our operators so powerful is the ingenious technology. Our motors are not statically fixed to one point; they travel along a stationary, tensioned chain. This ensures optimal application of force with maximum safety at all times.

## Intelligent control technology

The system continuously reads in the required force and adapts it to the external conditions, thus providing the highest level of safety against jamming or pinching. This continuous adaptation of the door running values means that the operator learns to adjust itself optimally to your door. This is how our operator becomes your operator.

## Certified quality

Our garage door operators are tested and certified according to the strictest guidelines. You can be assured that our products are of the highest "Made in Germany" quality. More than **5,000 door-operator combinations** with SOMMER garage door operators and doors from well-known manufacturers are certified. You can find the current reference list here: [www.som4.me/cgdo](http://www.som4.me/cgdo)



The restriction of closing forces is certified to EN 12453 via electronic motor monitoring. Tested by ift Rosenheim.

## LED lighting

The LED lighting integrated into the motor carriage is equipped with six individual LEDs, ensuring optimum lighting in the garage.

## Numerous expansions

The modular system structure makes it possible to expand the garage door operators with countless accessories.



Motor carriage with integrated LED lighting.



All accessories are easy to install via Plug and Play. Slots are colour-coded and labelled.



**Restriction of closing forces**

The system monitors the closing forces in accordance with EN 12453 via electronic motor monitoring. This control mechanism provides maximum safety.

**Emergency release**

Thanks to the integrated emergency release system, the motor carriage can be engaged and disengaged in any position. This makes it possible to open the garage even in the event of a power failure.

**Environmental and cost efficiency**

In power-saving mode, these energy-saving operators have a power consumption of less than one watt. This not only makes them inexpensive to operate, but also extremely environmentally-friendly.

**Safety thanks to encrypted radio control system SOMloq2**

Thanks to the bidirectional SOMloq2 radio control system, the operators can be controlled conveniently via radio. The 128-bit AES encryption with Rollingcode provides maximum protection of data against hackers.

**Universal use with various door types**

Our operators are suitable for sectional doors, overhead doors, up-and-over doors, one piece doors, side-opening sectional doors and side-opening doors. And the SOMMER pro<sup>+</sup> is also suitable for use on hinged double doors.

**Emergency power supply in the event of a power failure**

During a power failure, the operator can be run in emergency mode with our optional Accu, meaning that your door will never fail.

**Smooth-running and long-lasting**

Thanks to the gear-saving technology, the garage door operator is extremely quiet, low-wear and has a very long lifetime. The operator is completely maintenance-free.



Travelling motor operator system developed by SOMMER.

MADE IN GERMANY



# MODERN, BIDIRECTIONAL RADIO SYSTEM

For maximum convenience, we offer the corresponding radio products for all modules. With the data- and transmission-secure radio system, you will no longer have to get out of the car to open the garage door when it's raining, snowing or dark outside.

In addition to convenience, the bidirectional SOMloq2 radio control system provides the most advanced security.

The bidirectional radio control system offers numerous additional functions which make everyday life easier – from feedback on whether the radio signal is being received to status queries of the door to auto repeat and hop functions.

Control your systems conveniently with a handheld transmitter and benefit from our SOMloq2 radio control system when opening your yard gates and garage doors.



8

## Your key benefits with the SOMloq2

### Secure encryption

The future-proof SOMloq2 radio control system offers maximum data protection against hackers thanks to 128-bit AES encryption with rolling code.

### Repeating radio signal

The auto-repeat function ensures convenient opening while approaching the building. The output radio signal repeats in a certain cycle to permit optimal availability.

### High radio range

An innovative hop function extends the range, as radio signals are forwarded from SOMloq2 receivers.

### Also for existing SOMMER operators

Transmitters with the SOMloq2 radio control system are backward compatible with the Somloq Rollingcode radio system, making it possible to control existing operators and radio receivers.

### Is the door closed?

Query the current status of your door directly from the couch or your deck chair in the garden.



You can use the button marked in red to check whether your door is open or closed.









# SOMMER base<sup>+</sup>

The intelligent garage door operator, expandable with a range of additional equipment



11



<sup>1)</sup> The SOMMER base<sup>+</sup> features our most advanced garage door control unit with various optimised speed profiles and the option of precision setting of the operating forces. The system continuously learns automatically and adjusts the door operation accordingly.

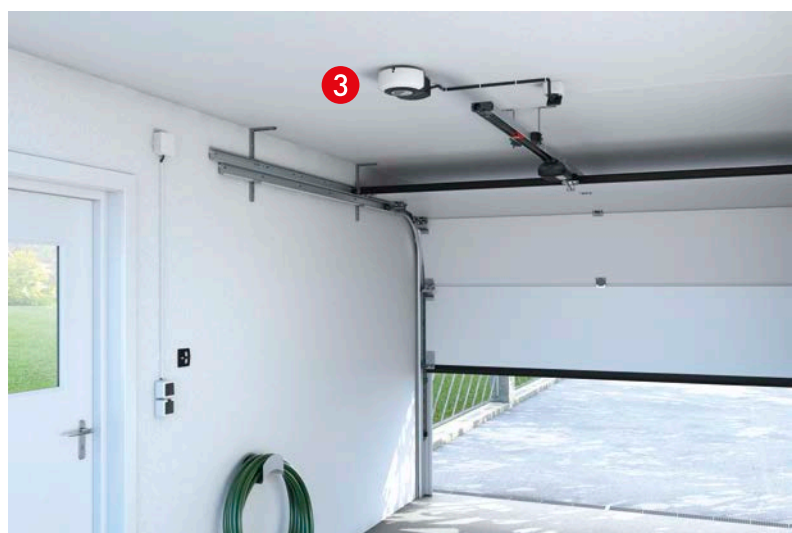
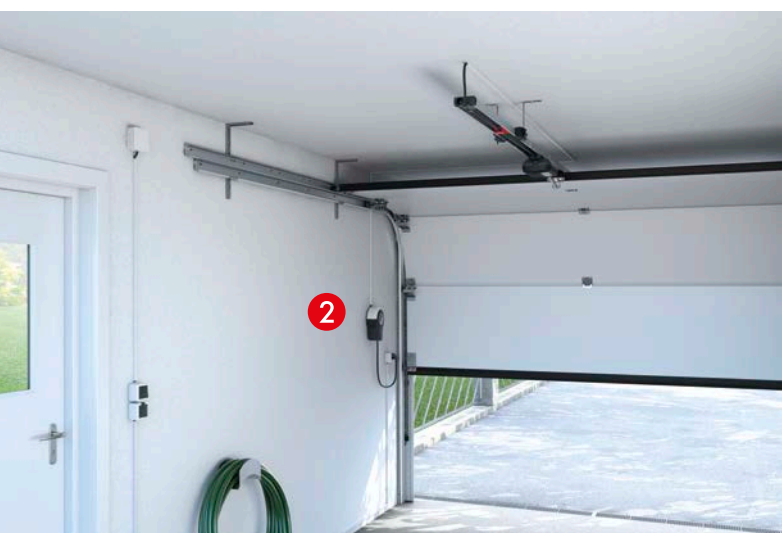
## Top quality

- The low-wear, robust and standard-compliant technology with its powerful, travelling motor ensures reliable operation and functionality for many years, with extremely low energy consumption.
- This gentle transmission technology ensures a long service life and less wear and tear on the garage door operator. The operator is completely maintenance-free.
- Intelligent, responsive control technology increases the service life of your door.
- Unique blockage detection: Damage, e.g. due to freezing conditions, is avoided.
- Secure door closing: Uneven ground conditions are compensated for thanks to the optimum closing pressure. Pests and leaves are kept outside.

## Maximum safety

- Optimised for break-in protection: The operator detects attempted break-ins and generates active counter-pressure through motor with high self-locking.
- Partial opening: For example, to move the door to a ventilation position via a radio command, or automatically as an option via the Senso humidity sensor.
- Power-saving LED lighting in travelling motor carriage for better lighting of the garage and any potential hazard areas.
- Integrated emergency release for manual interior operation of the door in the event of a power failure.

<sup>1)</sup> You can find the detailed warranty terms at [www.sommer.eu](http://www.sommer.eu)



The control unit can be mounted at the rear ①, at the front ② or on the ceiling ③.



# SOMMER pro<sup>+</sup>

Intelligent operator with separately operable control unit housing



<sup>1)</sup> The SOMMER pro<sup>+</sup> combines our most advanced garage door control unit with the flexibility of a separate control unit housing. There are three alternatives for separate installation of the housing (front, rear or on the ceiling) so that existing sockets can be used. The integrated button in the control unit housing offers additional convenience in the garage.

13

## Top quality

- The low-wear, robust and standard-compliant technology with its powerful, travelling motor ensures reliable operation and functionality for many years, with extremely low energy consumption.
- This gentle transmission technology ensures a long service life and less wear and tear on the garage door operator. The operator is completely maintenance-free.
- Intelligent, responsive control technology increases the service life of your door.
- Unique blockage detection: Damage, e.g. due to freezing conditions, is avoided.
- Secure door closing: Uneven ground conditions are compensated for thanks to the optimum closing pressure. Pests and leaves are kept outside.

## Maximum safety

- Optimised for break-in protection: The operator detects attempted break-ins and generates active counter-pressure through motor with high self-locking.
- Partial opening: For example, to move the door to a ventilation position via a radio command, or automatically as an option via the Senso humidity sensor.
- Power-saving LED lighting in travelling motor carriage for better lighting of the garage and any potential hazard areas.
- Integrated emergency release for manual interior operation of the door in the event of a power failure.

<sup>1)</sup> You can find the detailed warranty terms at [www.sommer.eu](http://www.sommer.eu)

# ADDITIONAL EQUIPMENT FOR CONVENIENCE, FUNCTION AND SAFETY



## Lock – Locking magnet

#1651V000

Magnetic motor lock which mechanically blocks the motor in any position up to an attack force of 300 kg, thereby improving the existing break-in protection.



## Senso – Humidity sensor

#10371

For recording temperature and air humidity in the garage. The door is automatically opened by the motor carriage as required, ensuring perfect circulation. When the optimum value is reached, the door is closed, reducing the risk of mould formation.



## Memo – Memory extension

#10373

Used to expand the memory to 450 handheld transmitter commands. During service, saved data can be easily adopted for a new motor carriage.

14



## Buzzer – Alarm/warning buzzer

#7043V000

Two functions in one product: The alarm buzzer recognises an attempted break-in and outputs a loud signal tone. The warning buzzer, on the other hand, outputs an acoustic signal during the closing process or when the wicket door is open.



## Lumi+ – Additional LED lighting

#7041V000

Additional LED lighting for the ceiling control unit. It is switched in parallel with the lighting in the motor carriage and can be easily switched on and off using the light function via a handheld transmitter.

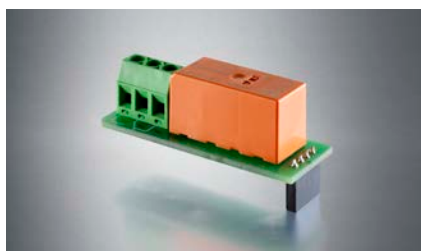


## Lumi pro+ – Additional LED lighting

#S10205-00001

Additional LED lighting for the wall control. It is switched in parallel with the lighting in the motor carriage and can be easily switched on and off using the light function via a handheld transmitter.





#### Relay – Additional relay

#7042V000

For activating external lighting or querying the door status "Door closed" / "Door not closed."



#### Laser – Parking position laser

#10378

The parking position laser ensures precise parking in the garage, even without a parking assist system.



#### Motion – Motion detector

#S10343-00001

The operator lighting is automatically switched on in the motor carriage when you enter the garage.

15



#### Accu – Emergency power supply

#S10523-00001

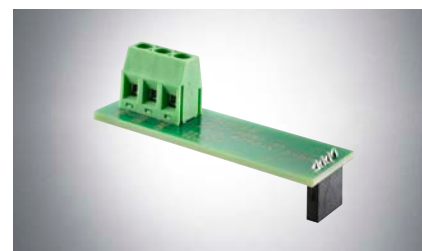
Provides emergency power supply for the operator for 12 hours and 5 door cycles in the event of a power failure.



#### Conex – Circuit board

#S10807-00001

Allows the connection of two corded pulse buttons for control of the door and one external lighting unit. Operating modes "Defined opening" and "Defined closing" can be optionally set via a DIP switch.



#### Output OC – PCB

#S10854-00001

Transfers the status (open/closed) to Smart Home systems. Optionally, a further external lighting unit with 24 V can be operated.

# HANDHELD TRANSMITTERS – OFFER YOU A WIDE RANGE OF OPTIONS

Handheld transmitters from SOMMER offer you a variety of options for making your everyday life easier. Open the garage door conveniently via radio control system, switch the light on and off or open the door.

## Pearl Status

3-command handheld transmitter with noticeable feedback of radio commands via vibration. Option of querying door position and receiver status without travel motion thanks to special red button. The handheld transmitters are available in the designs shown. Range: approx. 50–150 m



white/stainless steel



black/stainless steel



**Pearl**

4-command handheld transmitter, available in the designs shown.

Range: approx. 50–140 m

**Pearl Vibe**

4-command handheld transmitter with noticeable feedback of radio commands via vibration. Option of querying door position and reception status. The handheld transmitters are available in the designs shown.

Range: approx. 50–150 m



black/red

black/pink

white/pink

white/stainless steel

**Slider+**

4-command handheld transmitter. High quality, modern design with stainless-steel trim.

Range: approx. 50–140 m

**Slider Vibe**

4-command handheld transmitter with noticeable feedback of radio commands via vibration. High quality, modern design with stainless-steel trim. Option of querying door position and reception status.

Range: approx. 60–150 m



black/stainless steel

**Pearl Twin**

2-command handheld transmitter with large buttons for added convenience.

Range: approx. 50–140 m.



black/chrome

**Telecody+**

12-command handheld transmitter with illuminated keys. Weather-proof; can be used both indoors and outdoors. Radio receiver confirms received commands, an LED on the transmitter acknowledges receipt.



black/stainless steel

**Pearl holder**

For mounting in the car or on the wall; for all handheld transmitters in the Pearl series. Incl. mounting material. Available in the colours black and white.





# THE SECURE SMART HOME SOLUTION

SOMweb is the secure Smart Home solution where your data stay in the garage. This system enables you to control operators via a smartphone app or web browser. The data are safe, as they are not saved on external servers, but quite literally remain at home.

## Security

The integrated server stores all data on the SOMweb. No user data are stored on external servers, which are a potential target for hackers due to their high data volumes. This means your data are optimally protected against hackers. Communication between SOMweb and operator is via SOMloq2 radio control

system with 128-bit AES encryption. Push messages on door movements and the optional video function ensure even greater security outside the visible range.



Integrated server. All data are stored on the SOMweb and not on external servers.



Optional video function via bookable video plug-in.

## Convenience

With the SOMweb app, you can control all your operators at the touch of a finger.

### Intelligent control

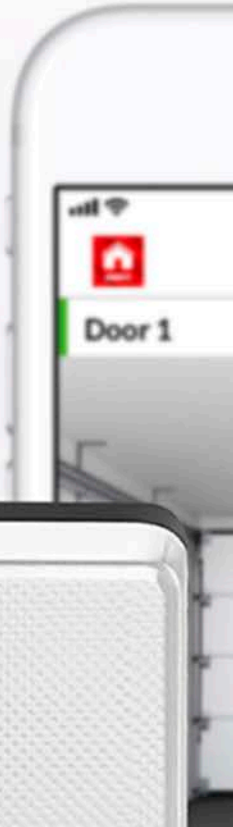
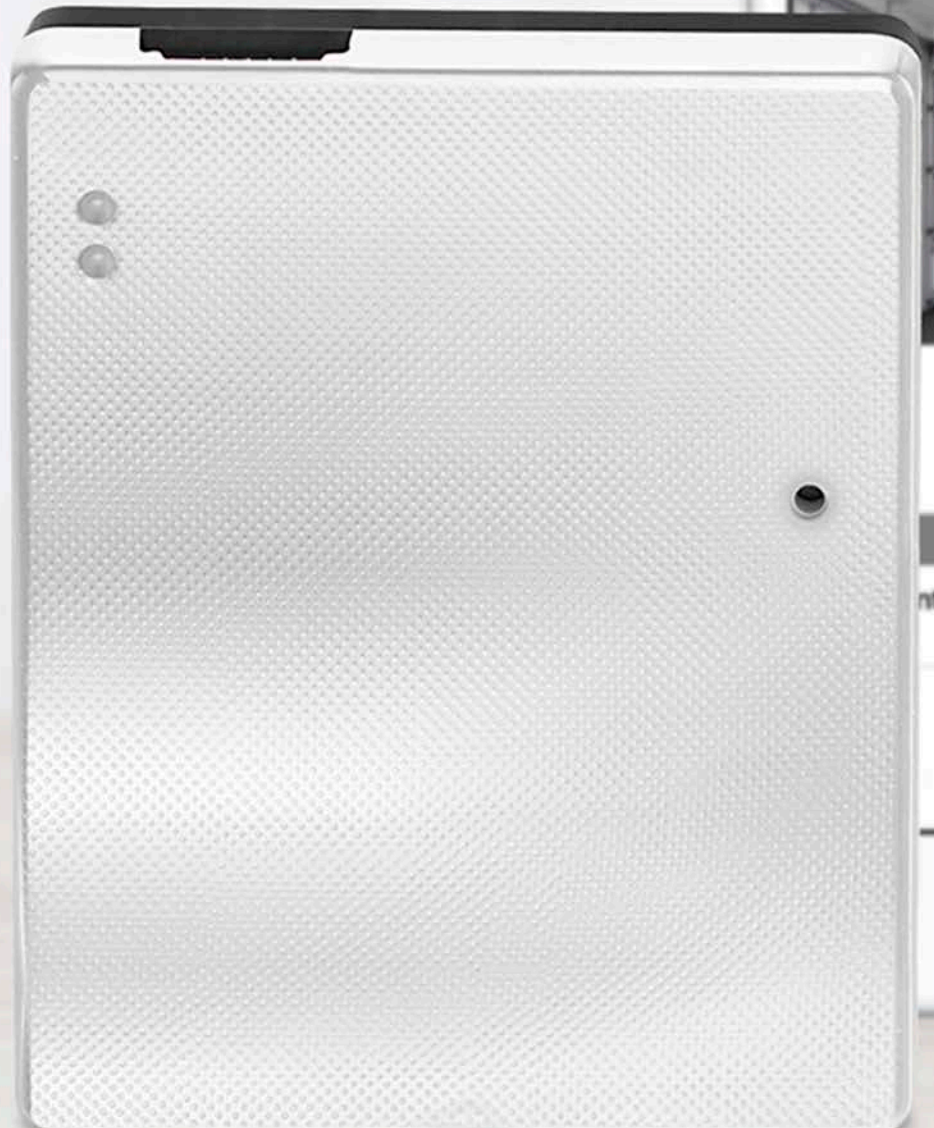
Download the SOMweb app and install it on your smartphone or tablet conveniently via Google Play or the App Store.

### Home network or Internet access

SOMweb is equipped with a server and establishes a direct connection between a WiFi-enabled device and the operator. For operation with a LAN cable, an optional LAN adapter for the USB port is required.

### Simple updating

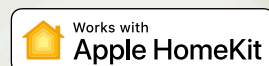
Via the app, it is extremely easy to keep your SOMweb up to date. The app informs you when updates are available. This means you don't have to worry about security.



## HomeKit

Works with Apple Homekit. HomeKit technology allows the use of the Apple Home App to create set-ups combining various devices. For example, to switch the hall light on automatically when you open the garage in the evening or query the door status with voice control via Siri.

- The SOMweb allows you to control garage doors via Siri voice control
- The Apple Home App allows location-dependent control
- We recommend iOS 11.0 or higher for control



## Google Assistant

Control operators using voice commands via Google Home or the Google Assistant. Open and close your door with a voice command or query the status of your door with Google voice control.



## Control via Amazon Alexa is possible using IFTTT

Creation of own events via the IFTTT platform. For example, automatic opening and closing of the garage at a defined distance, also called geo-fencing, from the door or at a specified time.

- Voice control via Amazon Alexa is possible using IFTTT
- IFTTT allows additional functions such as a separate applet for geo-fencing



## User management

User management and access control for ten users are included. The SOMweb can be expanded to 50 users or an unlimited number of users via bookable user plug-ins. The comprehensive user management system allows you to define time- or location-dependent access to doors.

The user plug-in is available in the SOMweb Store



Limit access for users by week, per day or by the exact hour.



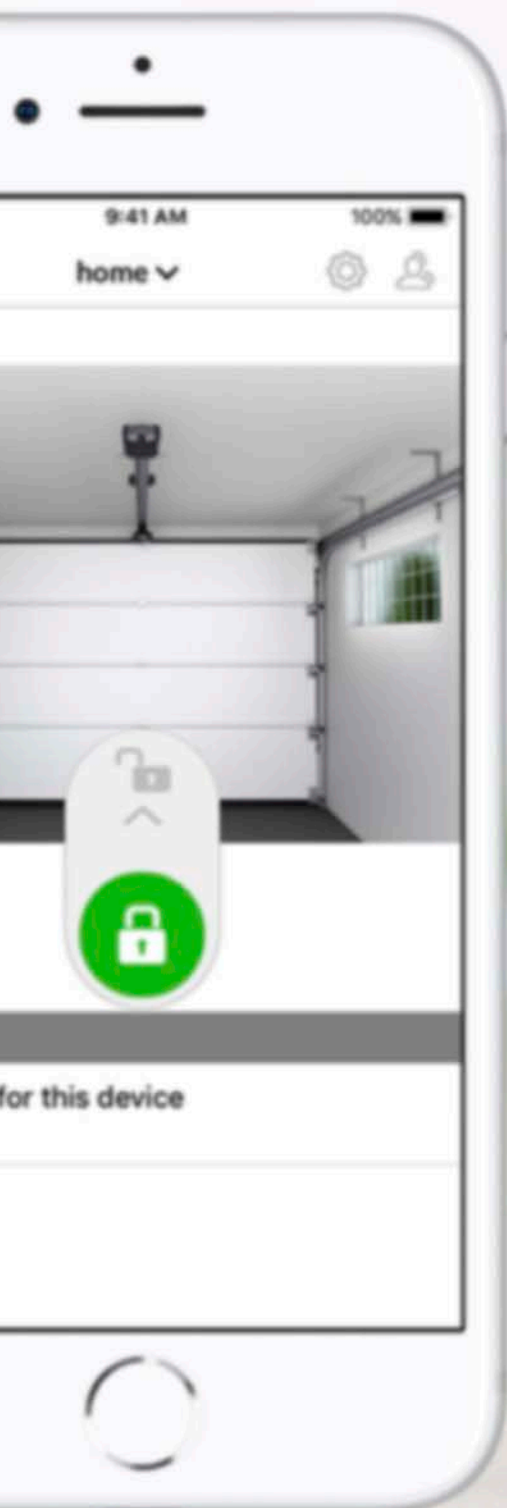
Specify which user can operate which door.



Specify whether the user only has access within the local network or also via Internet.



The calendar shows you when a door was opened and by whom.





# IT'S IN YOUR HANDS

... AND YOU WILL BE AMAZED BY WHAT CAN BE OPERATED BY RADIO TECHNOLOGY AND HOW MUCH CONVENIENCE YOU'LL GAIN

Our radio solutions allow you individual freedom in your own home, in the garden or in the garage.

At SOMMER, security and convenience go hand in hand. Only when you have that peace of mind can you fully reap the benefits of our limitless radio solutions.

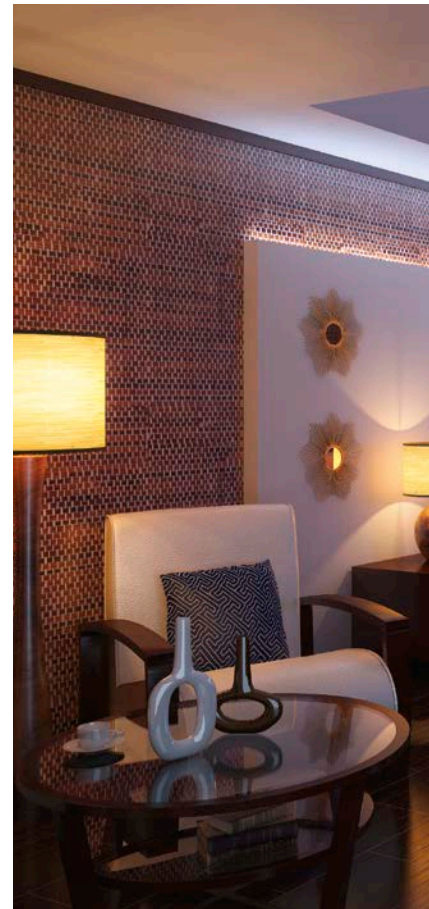
## EASY CONVERSION AND RETRO-FITTING WITH RADIO RECEIVERS

20

### **SOMplug**

#### **Radio receiver in power socket housing**

This radio receiver allows simple conversion of external operators and easy changing of the radio frequency. Optional feedback via the transmitter when the sent command has been processed by the receiver is also possible.



### **SOMsocket**

#### **Radio power socket**

The radio power socket can be used to switch the plugged-in application, for example a light, on and off via radio signal. A handheld transmitter can be used for a status query to establish whether the connected consumer is switched on or off.





### Handheld transmitter

Whether a handheld transmitter or a Telecody+, at SOMMER you'll find the right product, for a few to many applications and application areas, private or commercial.



Pearl Twin  
# S10019-00001



Pearl Vibe  
# 4019V000



Telecody+  
# S10212-00001



### Access systems

With the fingerprint systems, you can open garage doors and yard gates with one tiny movement of your finger. The radio code switches allow you to open your garage doors and yard gates with an individually programmable numeric code.



ENTRAsys+  
# S11189-00001

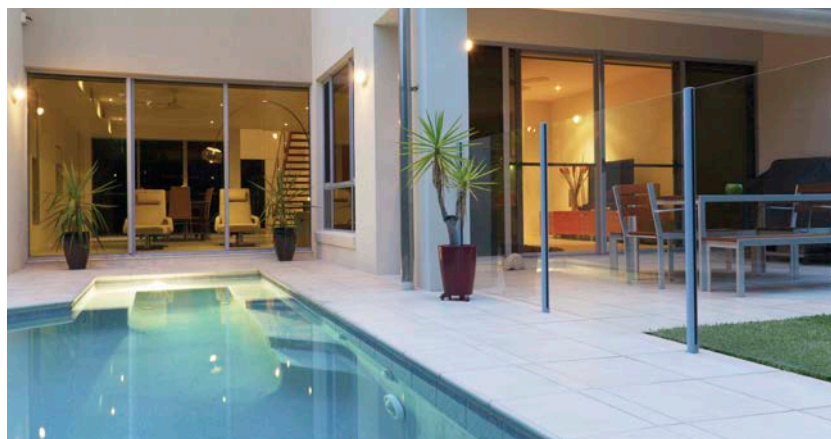


ENTRAsys+ flush-mounted version  
# S11186-00001



ENTRAcody+ surface-mounted version  
# S11188-00001

21



### SOMtouch radio wall button

Home automation applications, such as operators, blinds, roller shutters or awnings, can be operated conveniently using the indoor radio wall buttons. The small key allows a status query.



# S10447-00001



# S10447-00002

# THE MATCHING ACCESSORIES FOR THE OPTIMUM DOOR SYSTEM



Sectional door



Side-opening  
sectional door



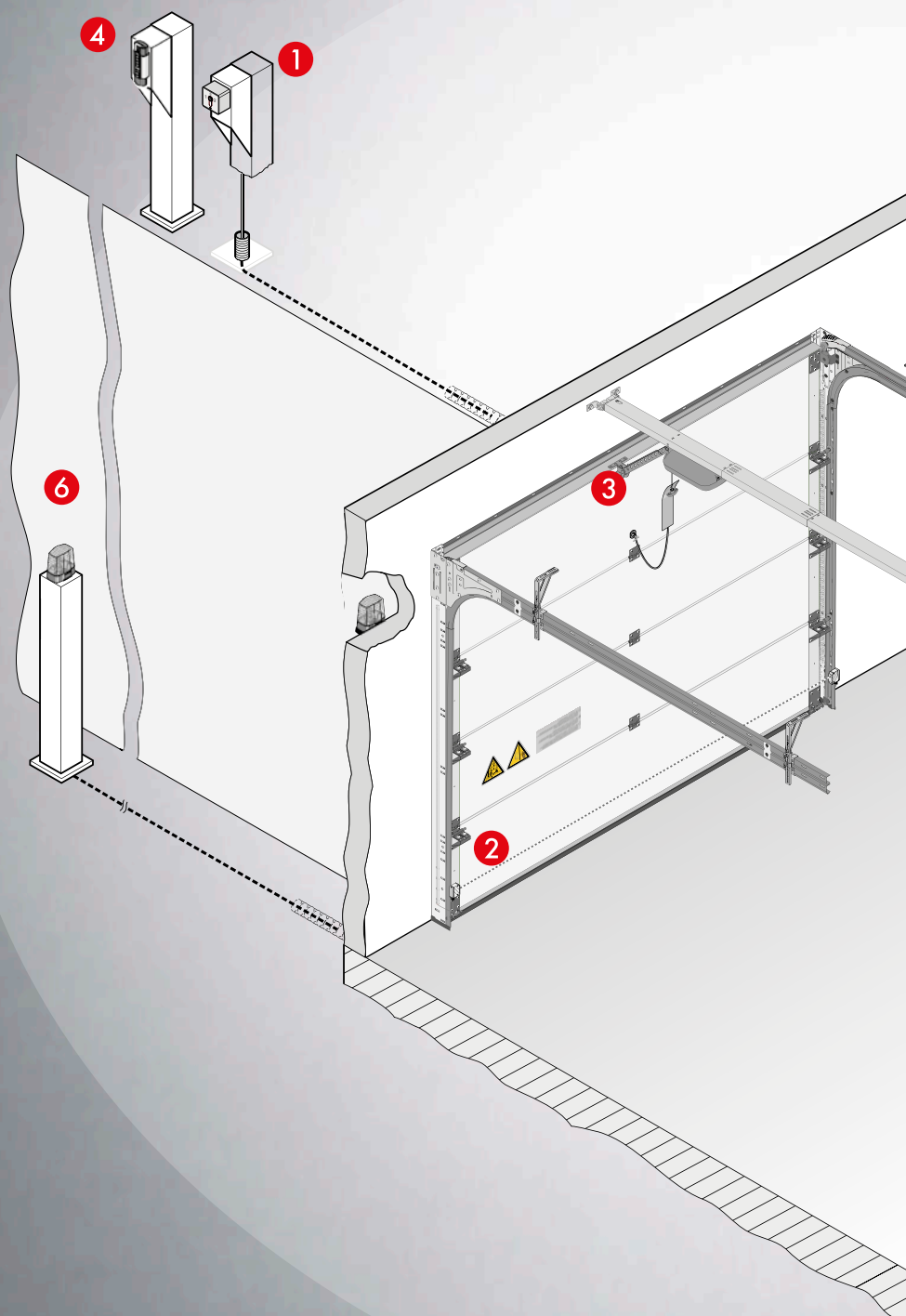
One piece door



Up-and-over door



Hinged double  
door





## EXTRA ADD-ONS FOR YOUR APPLICATIONS

### 1 Key switch

Allows the door system to be operated with a key by authorised persons.

### 2 Photocells

Photocells detect obstacles when the light beam is interrupted and prevent the door closing. They can be installed in a variety of scenarios and are even suitable for outdoor installation.

### 3 Emergency release lock

For fast and safe emergency release, e.g. in the event of a power failure, if there is no separate access to the garage. Suitable for all sectional doors, side-opening sectional doors, side-opening doors and hinged double doors.

### 4 Telecody+ coder switchgear

Large buttons for easy operation of the door.

### 5 Handheld transmitter

For convenient opening of the garage door or building doors, and for switching a light on and off.

### 6 Warning light

For additional optical hazard detection.

### Bowden wire

For door emergency release.

### Wicket door switch

With the wicket door open, the safety circuit is interrupted; the operator stops or will not start when the wicket door is open.



# OVERVIEW OF GARAGE DOOR OPERATORS

Technical data and connection options on the SOMMER base<sup>+</sup> und SOMMER pro<sup>+</sup> motor carriages

Operator unit	S 9060	S 9080	S 9110
Max. pull and pushing force	600 N	800 N	1,100 N
Max. door width/door height <sup>1)</sup> with: Sectional door	4,500 mm/2,500 mm	6,000 mm/2,500 mm	8,000 mm/2,500 mm
One piece door	4,500 mm/2,750 mm	6,000 mm/2,750 mm	8,000 mm/2,750 mm
Up-and-over door	4,500 mm/2,050 mm	6,000 mm/2,050 mm	8,000 mm/2,050 mm
Hinged double door <sup>2)</sup>	2,800 mm/2,500 mm	2,800 mm/2,750 mm	2,800 mm/3,000 mm
Side-opening sectional door/ side-opening door <sup>3)</sup>	2,500 mm (4,500 mm)/2,500 mm	2,500 mm (5,750 mm)/2,750 mm	2,500 mm (6,850 mm)/3,000 mm
Travel length (standard)	2,750 mm	2,750 mm	2,750 mm
Max. travel length extended	4900 mm 2 × extensions (1096 mm)	6,000 mm 3 × extensions (1,096 mm)	7,100 mm 4 × extensions (1,096 mm)
Max. door weight	120 kg	160 kg	200 kg
Max. running speed <sup>4)</sup>	240 mm/s	210 mm/s	180 mm/s
Power consumption (power-saving mode)	< 1 W	< 1 W	< 1 W
Duty cycle after S3 in %	40	40	40
Number of radio memory positions	40	40	40
Max. recommended no. of spaces	30	50	30
<b>Motor carriage</b>			
Operator lighting LED	✓ (6 LEDs)		
Lock slot	✓		
Memo slot	✓ (Expands the memory to 450 handheld transmitter commands)		
Senso slot	✓		
Buzzer slot	✓		
Laser slot	✓		
Motion slot	✓		
OSE/8k2 connection	✓		
Wicket door contact connection	✓		
Serial interface for Delta Dore X3D module or Homelink radio receiver module	✓		
Output 12 V, 100 mA	✓		

24

1) The values may differ depending on the installation position.

2) Only possible with SOMMER pro<sup>+</sup>! Separate hinged double door fitting required.

3) Side-opening sectional doors and side-opening doors wider than 2,500 mm can be implemented with the corresponding number of extensions.

4) Measured without door.

## Wall or ceiling control unit connection options

Type	SOMMER base <sup>+</sup>	SOMMER pro <sup>+</sup>
Ceiling control unit	✓	–
Wall control unit	–	✓
Battery pack slot	✓	✓
Keypad slot for foil keypad pro <sup>+</sup> / Conex	✓	✓
Relay slot / Output OC	✓	✓
Light slot for additional LED lighting Lumi <sup>+</sup> / Lumi pro <sup>+</sup>	✓	✓
Pulse button connection	✓	✓
Button 2 connection (partial opening)	✓	✓
Warning light connection	✓ (24 V / max. 25 W)	✓ (24 V / max. 25 W)
Connection for 2-/4-wire photocell; door CLOSE; DC 24 V	✓	✓
Output DC 24 V, 100 mA	✓	✓

# SECURITY ASSURED WITH THE PERFECT SOLUTION



26

GARAGE DOOR OPERATORS

UNDERGROUND GARAGE

OPERATORS

YARD AND OUTDOOR GATE

OPERATORS

RADIO TECHNOLOGY

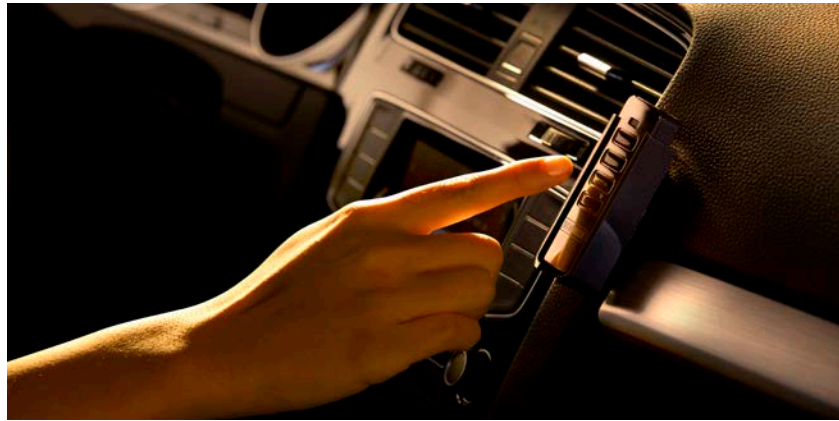
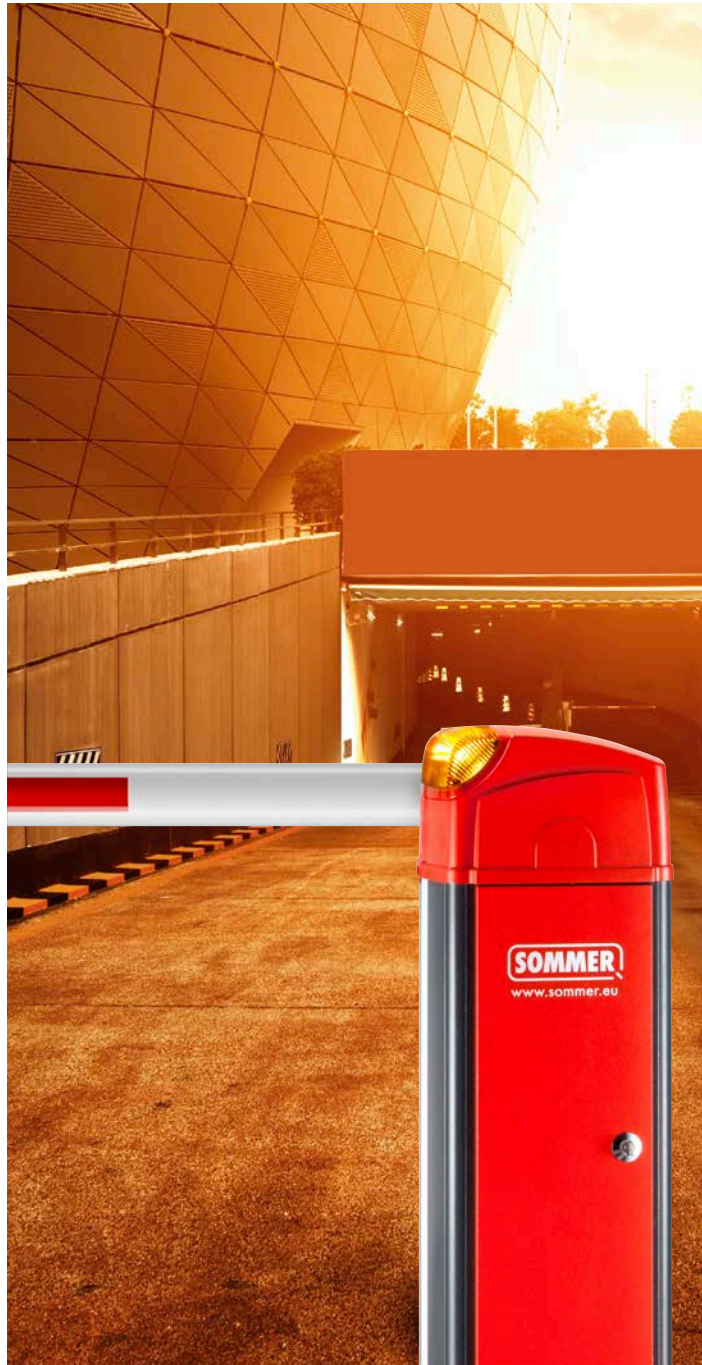
SMART HOME

ACCESS SYSTEMS

ROLLER SHUTTER OPERATORS







AWNING OPERATORS  
ROLLER DOOR CONTROL UNITS  
INDUSTRIAL DOOR OPERATORS  
BARRIER SYSTEMS  
ACCESSORIES



DE-EN # S1445-00015 07/2020 Errors and omissions excepted, subject to technical changes.



**SOMMER ANTRIEBS- UND FUNKTECHNIK GMBH**  
HANS-BÖCKLER-STR. 21-27 | D-73230 KIRCHHEIM/TECK  
TEL. +49 70 21 80 01-0 | FAX +49 70 21 80 01-100  
INFO@SOMMER.EU | WWW.SOMMER.EU

  SOMMERGMBH